

Shelter Usage: (All monies go towards Parks and Shelter improvements)

Shelter	2023 Cost	Group Size
#1 Dr. Meyer (Enclosed /Bathrooms)	\$82	65 - 75
#2 E. Keepers (Attached Bathrooms)	\$65	80 – 110
#3 Earl Anderson	\$55	65 – 75
#4 Charles Lawrence	\$55	75 - 100
#5 Robert Retrum	\$55	75 - 100
Retrum & Lawrence	\$98	150 - 200
#6 B.I. Pippin Shelter	\$55	65 - 75
#7 Glenn Ferguson	\$55	65 - 75
#8 Lions @North Park	\$55	65 - 75
#8 Lions plus Concession Stand use	\$82	N / A
#9 JWOM Veteran's Memorial Pavilion	\$55	50 - 100
#10 Don Klingaman @ North Park Pond	\$55	75 - 100
#11 Carl Chellevoid @Lions Park (no water)	\$55	65-70
#12 RCHS 1968 Hornet Hive @Old MillPond Park	\$65	65-70

Park Shelters

Richland Center
Parks & Recreation Department

**Richland Center
Parks & Recreation**

1050 N. Orange Street
Richland Center, WI
(608) 647-8108 ext. #1

parksandrecreation@richlandcenterwi.gov

richlandcenterwi.gov

The Richland Center Parks and Grounds Department maintains and operates 12 Shelters located at various locations in the parks that are surrounded by other recreational facilities, such as Playgrounds, Basketball courts, Volleyball courts, Soccer fields, Tennis & Pickleball courts, Outdoor pool and much more.

Each shelter comes with a number of picnic tables that are perfect for hosting family gatherings as well as other social events. Located close to these shelters are well maintained public amenities such as restrooms, garbage cans and drinking fountains. See the reverse side for a map of shelter locations.

Application forms are available at the Richland Center Community & Senior Center or downloadable off of our website: www.richlandcenterwi.gov. Forms must be completed and signed by the applicant, accompanied by the correct fee for the request for a park facility reservation.

Office hours are Monday—Friday
8:00 am-4:30 pm.

Shelters are available to rent between
April 15 and October 15th.

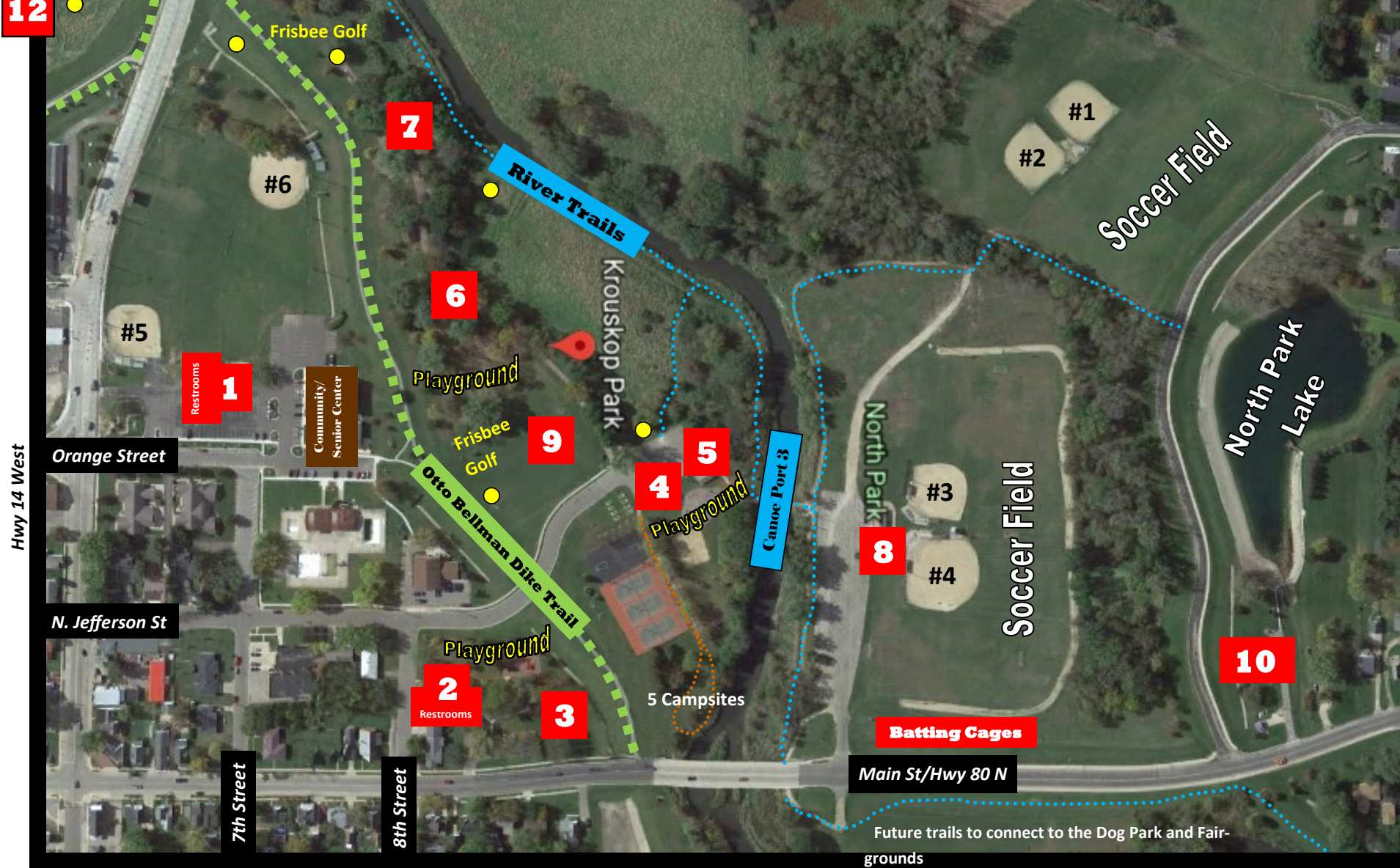


Richland CENTER
PARKS & RECREATION

Map of Richland Center Park Shelters - Krouskop & North Park

Match up Shelters with numbers on the map

Canoe Port 4 **12** **Old Mill Pond Park**: located on Seminary Street (original Community Center site) RCHS Hornet Hive Shelter / All Access Canoe Port-Pier #4 / Mill Pond Community Gardens / Five water/electric Campsites / Playground area



- | | |
|---|---|
|  |  |
| 1) Dr. Kilian Meyer
950 N. Orange St. | 2) Eunice Keepers
200 W. 8th St. |
|  |  |
| 3) Earl Anderson
1100 N. Main St. | 4) Charles Lawrence
1100 N. Jefferson St. |
|  |  |
| 5) Robert Retrum
1100 N. Jefferson St. | 6) B.I. Pippin
1100 N. Jefferson St. |
|  |  |
| 7) Glen Ferguson
1100 N. Jefferson St. | 8) Lions w/Concession
1340 Allison Park Dr. |
|  |  |
| 9) JWOM Veteran's Memorial Pavillion
1100 N. Jefferson St. | 10) Don Klingaman
1690 Allison Park Dr. |
|  |  |
| 11) Carl Chellevold
23595 WI Trunk 80 N. | 12) RC '68 Hornet Hive
600 W. Seminary St. |

Woodman "Happy Tails" Dog Park Located on Hwy 80 North @Industrial Rd
 Volleyball / Pine River Remote Control Raceway
 /Two Electric Campsites **Canoe Port 2** **11**